

# Swedish Chairmanship of the Barents Euro-Arctic Council 2017–2019



# Common Challenges

- Vast distances
- Vulnerable environment and ecosystems
- Negative demographic development

Image: JonatanStålhös/imagebank.sweden.se



# The Swedish Barents Counties

- Counties of Västerbotten and Norrbotten
- Rich on natural resources
- Swedish Sápmi
- 35 % of Sweden's area,
- but only 5 % of its total population.

# Barents Cooperation

- Established in 1993 in Kirkenes
- Unique cooperation on both national and regional levels
- Sustainable development by promoting peace and stability
- People-to-people contacts



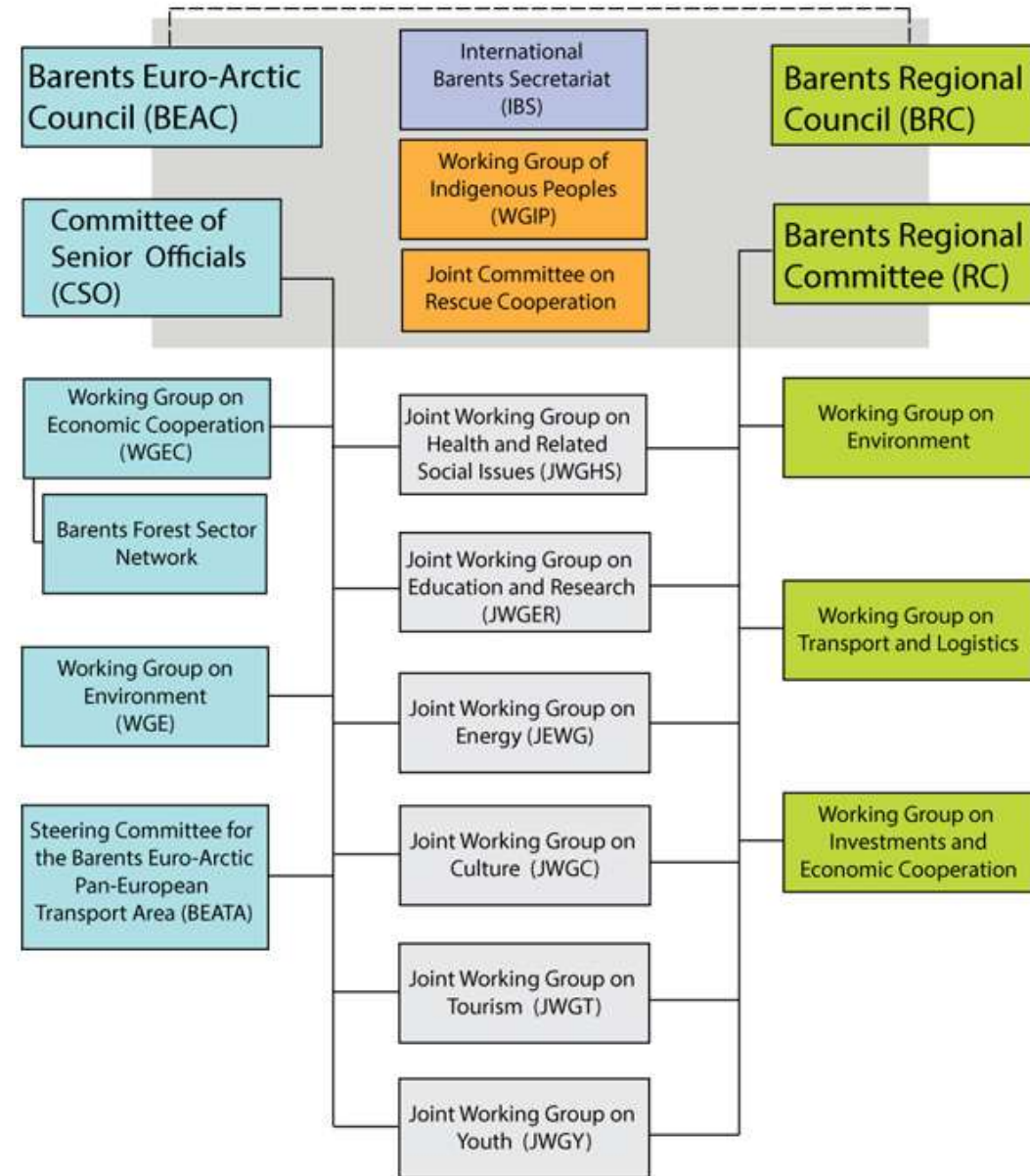
# Unique Role of Indigenous Peoples



- Sami, Veps, and Nenets
- Working Group of Indigenous Peoples
- Advisory role in all areas of cooperation

# The Barents Cooperation

- 1 of 15 Working Groups
- International Barents Secretariat



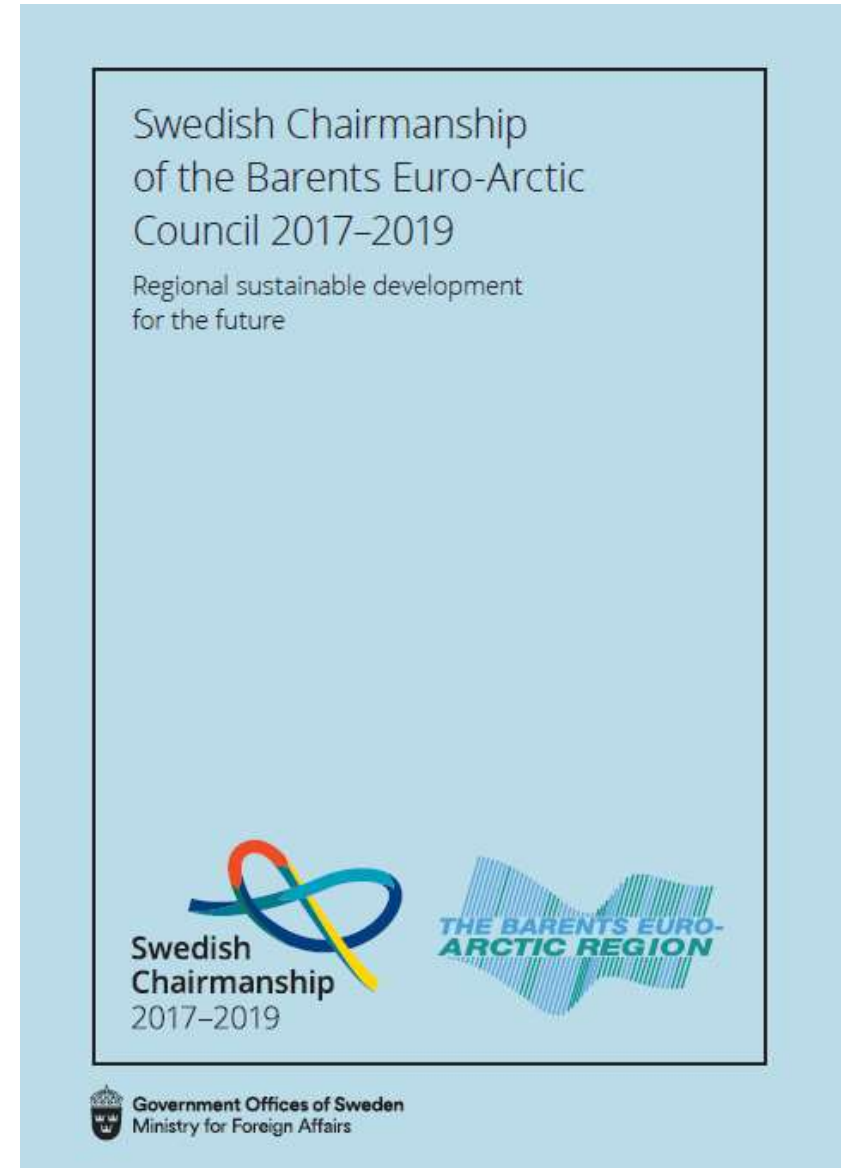
# SDGs in Barents Cooperation



- 17 Sustainable Development Goals
- Almost all of them relevant to Barents Cooperation
- Integral part of the Swedish Chairmanship

# Chairmanship Priorities

- Environmental Dimension
- Economic Dimension
- Social Dimension
- Strengthened cooperation and increased visibility





# 25 Years of Barents Cooperation-Youth Perspective for the Future

- Barents Cooperation celebrates 25 years in 2018. Conference 17-18 April 2018 in Luleå.
- The young generation is the future of the region
- What will Barents cooperation look like 25 years from now?



# Thank you!



## Website

[www.barentscooperation.org](http://www.barentscooperation.org)

## Facebook

@BarentsCooperation

## Twitter

@barents\_beac

